

ST 060 300 2371

- rotary diverter
- rosette Ø 85 mm



Individual components of this set

You need the following components for this set



1x

36 104 371-09



1x

11 170 370-09



MADISON Concealed two- and three-way diverter - Durabronss (23kt Gold)

MADISON

ST 060 300 2371

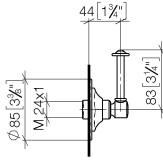
ST 060 300 2371



- rotary diverter
- rosette Ø 85 mm

ST 060 300 2371

mm [inches]

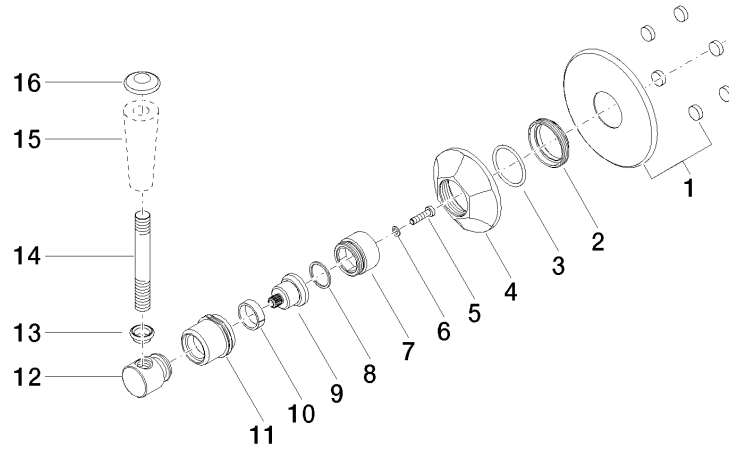


Codes & Standards

ADA

Certificates

LGA_28456.



Spare parts list

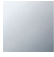

No.	Item Number	Name	Quantity used	Delivery time
1	90 27 97 007 00-09	cover	1	-
Spare part can no longer be ordered, please order the replacement item				
2	09 23 10 125-00	nut	1	10
3	90 14 10 063 00 90	seal	1	2
4	09 27 37 101-09	rosette	1	40
5	09 30 30 069 90	screw	1	2
6	09 30 11 194 90	disc	1	2
7	09 18 30 007-09	sleeve	1	60
8	90 28 10 030 00 90	ring	1	2
9	09 12 12 064-09	base	1	60
10	90 14 15 021 00 90	ring	1	2
11	09 21 02 160-09	cover	1	40
12	09 20 37 101-09	handle	1	40
13	09 20 37 001-09	handle	1	40
14	09 28 22 013 90	pipe	1	2
15	11 170 370-09	MADISON Lever insert - Durabronz (23kt Gold)	1	40
16	09 30 30 062-09	screw	1	40

ST 060 300 2371

- for basin fittings

NOTE: Mixers are supplied without lever inserts.
Please order the lever inserts separately!



	Durabronss (23kt Gold)	11 170 370-09
	Chrome	11 170 370-00
	Brushed Platinum	11 170 370-06
	Platinum	11 170 370-08
	white	11 170 370-12
	black	11 170 370-13
	Brushed Durabronss (23kt Gold)	11 170 370-28
	Brushed Dark Platinum	11 170 370-99

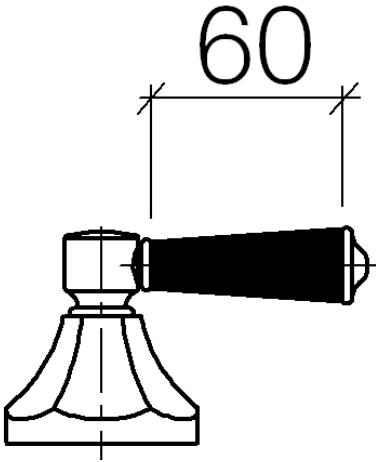


MADISON Concealed two- and three-way diverter - Durabronss (23kt Gold)

MADISON

ST 060 300 2371

ST 060 300 2371





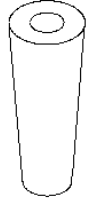
MADISON Concealed two- and three-way diverter - Durabronss (23kt Gold)

MADISON

ST 060 300 2371

ST 060 300 2371

Parts for other
finishes can be found
here: Chrome





MADISON Concealed two- and three-way diverter - Durabronss (23kt Gold)

MADISON

ST 060 300 2371